

New!

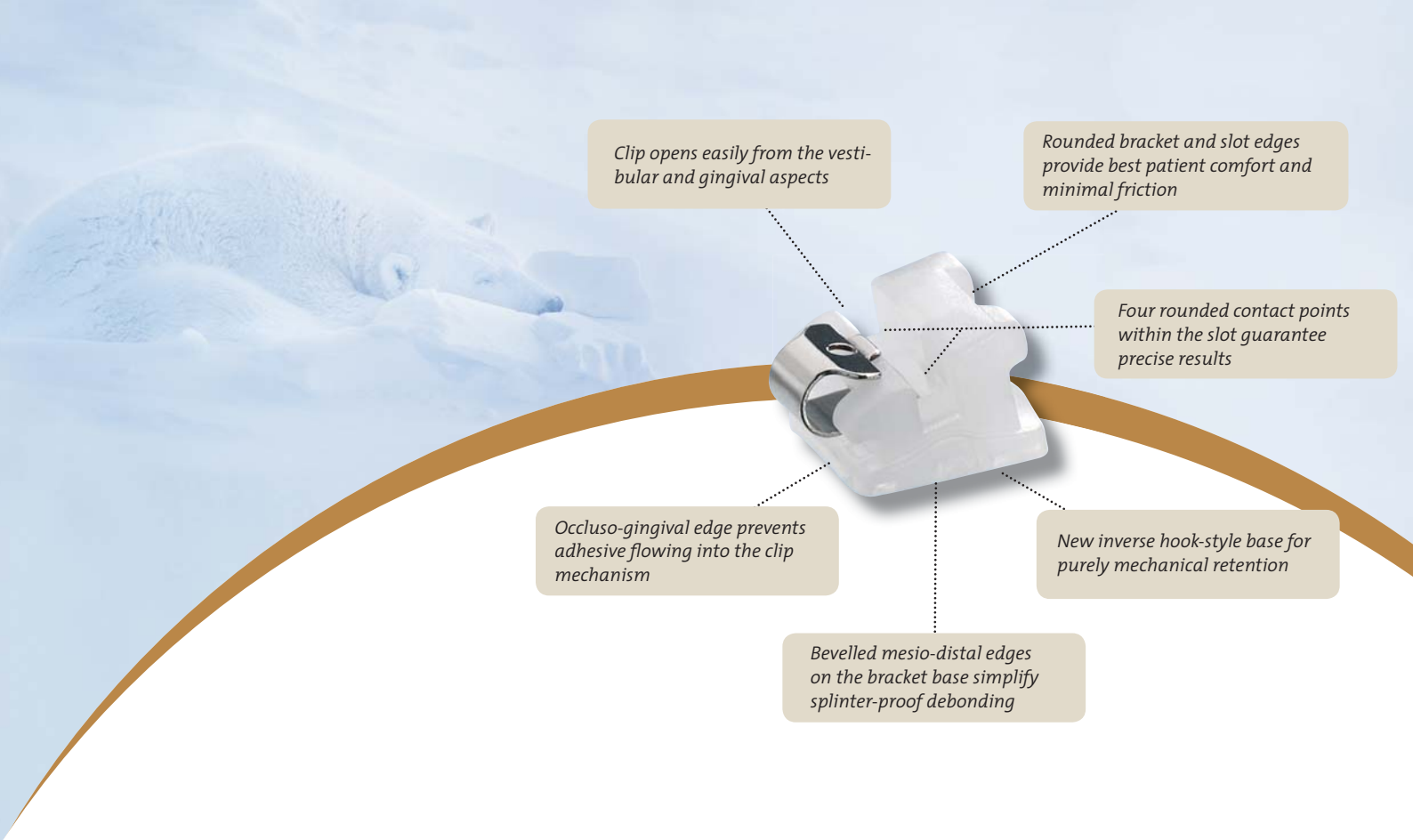


Strength and Aesthetics

*Invisible and fast –
a new quality of attractiveness*



QuicKlear®-Brackets



Clip opens easily from the vestibular and gingival aspects

Rounded bracket and slot edges provide best patient comfort and minimal friction

Four rounded contact points within the slot guarantee precise results

Occluso-gingival edge prevents adhesive flowing into the clip mechanism

New inverse hook-style base for purely mechanical retention

Bevelled mesio-distal edges on the bracket base simplify splinter-proof debonding

QuicKlear®-Brackets

Invisible and fast



Outstanding translucency

After three years of intense research, FORESTADENT's engineers succeeded in developing a new ceramic mixture. It combines unique, mechanical stability with high translucency. The QuicKlear® bracket provides orthodontists with a bevelled ceramic bracket in a real twin design which flawlessly matches the patient's natural aesthetics. Thanks to its high translucency, it blends with the tooth and patients can still show their attractive smile without having to think twice.

Strength from the base

An absolutely newly developed and patented bracket base ensures easy and safe handling of QuicKlear® brackets:

- The inverse-formed hook-style base with bevelled edges and diametrically offset retaining holes provides purely mechanical retention. Therefore, the QuicKlear® bracket not only offers increased bond strength on teeth but also trouble-free debonding following treatment. Enamel chipping is prevented as most of the adhesive remains on the tooth after debonding.



New inverse hook-style base

- An occluso-gingival edge on the bracket base prevents excess adhesive flowing into the clip mechanism when positioning the brackets. This edge also simplifies the removal of excessive adhesive.



Occluso-gingival edge on the bracket base prevents adhesive flowing into the clip mechanism

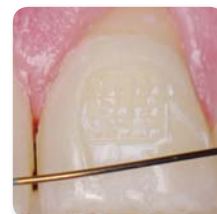
FORESTADENT based the development of the new QuicKlear® brackets on nature. A new ceramic mixture was created which matches the patient's natural tooth shade perfectly. This ensures that QuicKlear® brackets are perfectly camouflaged and can only be spotted when looking closer.

The QuicKlear® bracket is a self-ligating, translucent, ceramic bracket which complements the QuicKlear®>2.0® bracket system as an aesthetic alternative. The QuicKlear® is an active bracket featuring the proven and familiar closing mechanism of the QuicKlear®>2.0® bracket system. Its outstanding aesthetics and stability promise a natural smile and short chairside times. Ideal conditions for satisfied patients.

- FORESTADENT's new ceramic bracket debonding tool provides for safe and splinter-proof debonding of QuicKlear® brackets following treatment. Alternatively, modified debonding pliers can be used. Mesio-distal bevelled edges on the bracket base guarantee splinter-proof debonding.



Splinter-proof debonding with the QuicKlear® bracket removing tool



Adhesive remains on the tooth after debonding of the QuicKlear® brackets



Bracket base after debonding a QuicKlear® bracket

Easy opening and closing

Two integrated opening mechanisms guarantee easy and gentle opening of the clip towards the occlusal aspect, similar to the well-known QuicKlear®>2.0® brackets. The clip can be opened easily from the vestibular or

gingival aspects. The new guidance channels and a newly developed, distinctive funnel facilitate opening with a probe from the gingival aspect. As previously, the clip can be closed by exerting gentle finger-pressure. The reliable clip made of highly elastic chromium-cobalt alloy is virtually invisible due to its small dimensions.



Distinctive funnel for easy opening of the QuicKlear® brackets

Highly efficient force transmission

Rounded slot edges and a four contact point slot, with minimal contact area, provide controlled force transmission at minimal friction.

This provides orthodontists with:

- More archwire tolerance in the slot, especially within the levelling phase with severely displaced teeth.
- More precise results when using slotfilling archwires.



Rounded slot edges and a four contact point slot provide minimal friction

Perfect combination of aesthetics, precision and gentle forces

In the upper aesthetic zone we recommend QuicKlear® brackets combined with QuicKlear®>2.0® metal brackets on all other teeth. This simplifies introduction into your daily practice without requiring costly changes in treatment procedures. When using other brackets in combination with QuicKlear® brackets, and especially with thicker wires, the wires may require extra bending to compensate the slot height variation.

The precisely rounded slot edges of the QuicKlear® and QuicKlear®>2.0® brackets even allow the use of tooth-shade coated archwires. To date, these archwires were not recommended for metal and ceramic slots due to their sensitive surfaces. To achieve perfect aesthetics in the maxilla we recommend the use and regular replacement of tooth-shade coated Titanol® Cosmetic archwires – they should not be bent as this may damage their coating. BioStarter® and BioTorque® archwires, recommended for extended intervals or compensatory bending, provide for minimal forces, reduced friction and perfect force transmission.



Perfect aesthetics with Titanol® Cosmetic archwires



QuicKlear®-Brackets

CE 0297



Slot .018"

MAXILLARY

Roth System

	-	-	-	C731-0203	C731-0103	C730-0103	C730-0203	-	-	-
	C731-0513*	C731-0513*	C731-0313	-	-	-	-	C730-0313	C731-0513*	C731-0513*
	5	4	3	2	1	1	2	3	4	5
	Torque -7°	-7°	-2°	+8°	+12°	+12°	+8°	-2°	-7°	-7°
	Angulation 0°	0°	+11°	+9°	+5°	+5°	+9°	+11°	0°	0°
	In/Out 0,9	0,9	0,9	1,5	1,0	1,0	1,5	0,9	0,9	0,9
	Rotation 2° distal	2° distal	4° mesial					4° mesial	2° distal	2° distal

Cases	1	1	5	5
Brackets	6**	20***	30	100***
	3	C706-1060	C706-1061	C706-1072
	3-5	-	C706-1062	-
				C706-1074

* from summer 2009
 ** Max. 3-3 QuicKlear®-Brackets
 *** content:
 Max. 3-3 QuicKlear®-Brackets
 Mand. 5-5, max. 54,45 QuicK >>2.0®-Brackets

Slot .022"

MAXILLARY

Roth System

	-	-	-	C731-0201	C731-0101	C730-0101	C730-0201	-	-	-
	C731-0511*	C731-0511*	C731-0311	-	-	-	-	C730-0311	C730-0511*	C730-0511*
	5	4	3	2	1	1	2	3	4	5
	Torque -7°	-7°	-2°	+8°	+12°	+12°	+8°	-2°	-7°	-7°
	Angulation 0°	0°	+11°	+9°	+5°	+5°	+9°	+11°	0°	0°
	In/Out 0,9	0,9	0,9	1,5	1,0	1,0	1,5	0,9	0,9	0,9
	Rotation 2° distal	2° distal	4° mesial					4° mesial	2° distal	2° distal

Cases	1	1	5	5
Brackets	6**	20***	30	100***
	3	C706-1063	C706-1064	C706-1073
	3-5	-	C706-1065	-
				C706-1075

* from summer 2009
 ** Max. 3-3 QuicKlear®-Brackets
 *** content:
 Max. 3-3 QuicKlear®-Brackets
 Mand. 5-5, max. 54,45 QuicK >>2.0®-Brackets

C501-1841 CE		1	QuicKlear® Director
C501-0814 CE		1	„Pauls-Tool“ for debonding of QuicKlear® brackets
C501-0827 CE		1	QuicKlear® bracket debonding plier
C501-0826 CE		1	Adhesive removing bur
C950-1000		1	Typodont QuicKlear® & QuicK >> 2.0®-Bracket Roth-System